

# 2024 VINYL STYLES

- Exceptional quality control for over 30 years
- Proudly supporting North American vinyl material
- *Let us show you the Total Tech difference!*

**SERVICE • VALUE • EXPERIENCE**

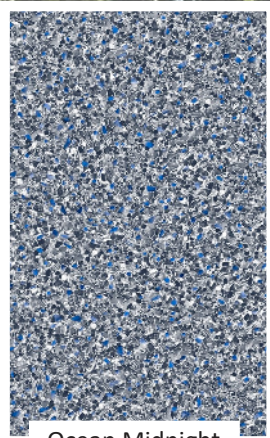


**Total Tech<sup>®</sup>**  
**Pools & Leisure**

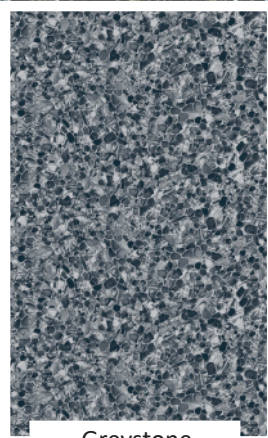




Palm Court



Ocean Midnight



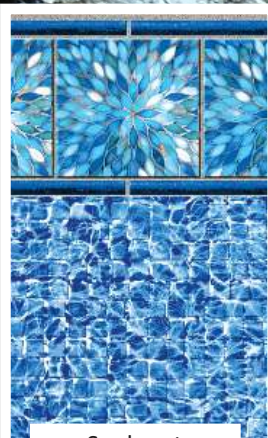
Greystone



Moroccan Tile



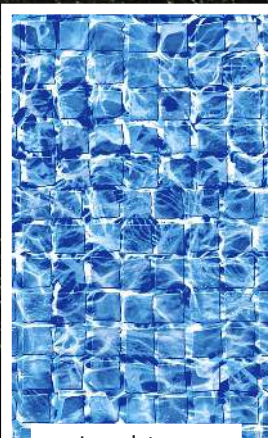
Tan Del Caribe



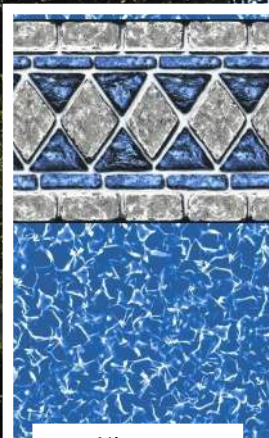
Sunburst



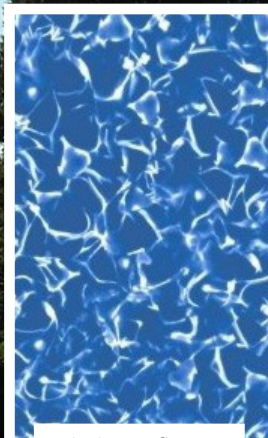
Carnival



Jewelstone



Niagara



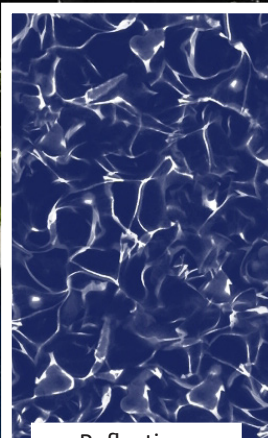
Mid-Blue Reflections



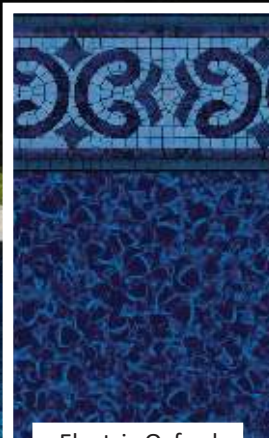
Oxford



Cambridge



Reflections



Electric Oxford



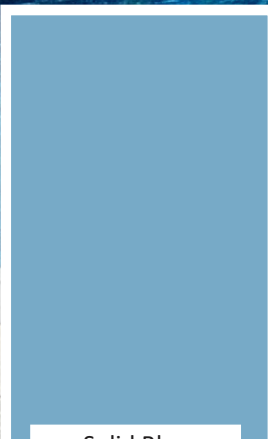
Blue Mountaintop Mosaic



Charcoal Mosaic



Black Slate



Solid Blue



Solid White

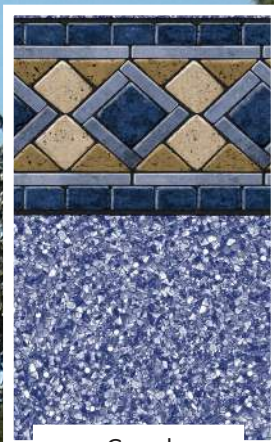


Carrera Marble





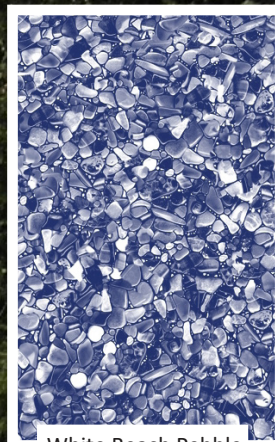
Tan Argos



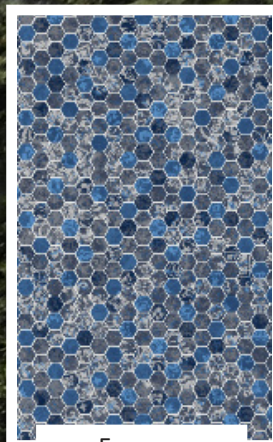
Grand



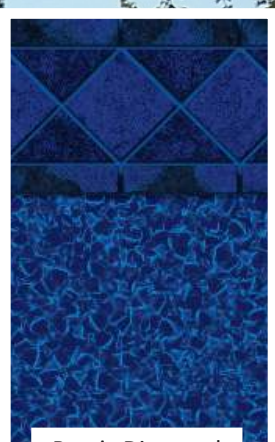
White Raleigh



White Beach Pebble



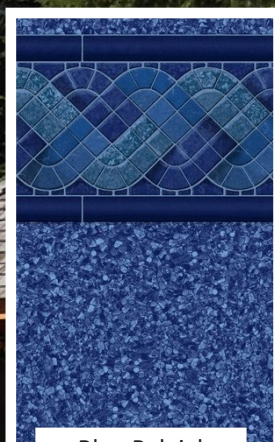
Esagono



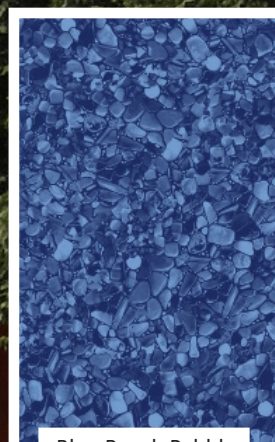
Rustic Diamond



Pueblo



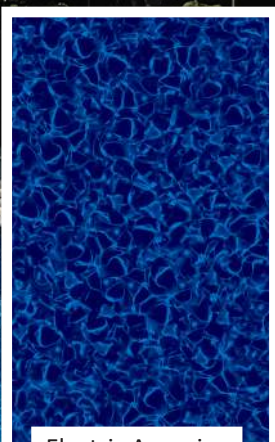
Blue Raleigh



Blue Beach Pebble



Beachglass



Electric Aquarius



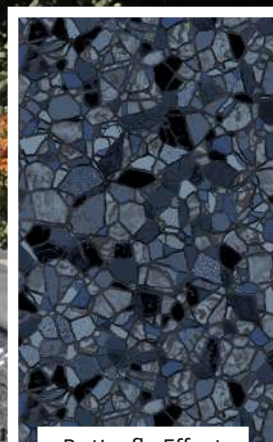
Starburst Cobalt



Amelia Cobalt



Cobalt



Butterfly Effect

## 2024 Vinyl Styles



**Total Tech**<sup>®</sup>  
Pools & Leisure



# Quality we stand behind

We partner with only the industry's leading manufacturers. Our vinyl liner suppliers manufacture the sheet vinyl using only the highest quality raw materials available on the world market. The vinyl undergoes quality control on colour, compliance, as well as thickness.

## SEAMS

High-Frequency Molecular Welding provides the strongest seam on the market & withstands the test of time! Reliable and durable high-frequency molecular welds are used in the fabrication of all our pool liners. This process has been used in the industry for over 50 years and has proven to be the best and longest lasting method of sealing swimming pool vinyl. Pool liners are fabricated from a roll of vinyl. This means that seaming of the material is required to fit the custom shape of each swimming pool. Seams may be visible upon close inspection of finished pool liner, however from normal viewing distance under water, seams do not usually distract from the overall appearance of the swimming pool. In order to ensure proper and long lasting seams, a slight extrusion of material is normal, this indicates that both pieces of material have been completely fused together, forming a joint which is stronger than either piece of material alone.

## KINGSTON

2793 Princess Street, Woodbine Plaza

Kingston, ON K7P 2X1

Tel. 613.389.7665

kingston@totaltechpools.com

## OAKVILLE

1380 Speers Road

Oakville, ON L6L 5V3

Tel. 905.825.1389

info@totaltechpools.com

# [www.totaltechpools.com](http://www.totaltechpools.com)



Total Tech vinyl styles are brought to you by MEGNA POOLS

